



Cas Interface 2 User Manual. Rev. 1.0  
www.duolabs.com - all rights reserved.



# User Manual

- English -



## **Summary**

- 1. What's the Cas Interface 2.**
- 2. Cas Interface 2 - Kit.**
- 3. Driver Installation.**
- 4. Cas Studio & Control Panel.**
- 5. @ CAM Programming.**
- 6. Ucas Programming.**
- 7. General Information.**



# 1. What's the Cas Interface 2.

The Cas Interface 2 it's the evolution of the old Cas Interface and Cas Interface +Plus.

This device connects to the USB port of your PC and becomes one of the most flexible and user friendly programming tool for Common Access Modules, receiver, smartcard, cellular phone e and more.

Thanks to the capability of firmware uploading this product will hardly become obsolete.

The communication speed with the PC it's Full Speed USB 1.1/2.0 compliant and the internal PLC can generate a programmable clock up to 90 Mhz. Furthermore the 20 Pin Add-On Extension Port it's fully programmable and can be used for further application.

The great software flexibility and its continuous update makes you wonder this question: What do we program today?

There are very big differences with the old Cas Interface and Cas Interface +Plus. We'd rather say that the Cas Interface 2 it's a totally different product with incredible features.

All the supported devices, connection diagrams and software updates will be released directly on our online web site.

To be continuously updated on our released please subscribe our online forum.

If you want to send us emails regarding software bugs please be specific regarding the matter you incurred in.

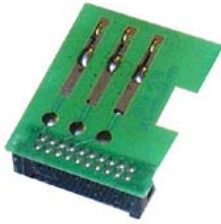
In the Kit and in this manual you'll find all the instructions and basic lessons in how to program CAM and receivers. All further information can be found on our web site [www.duolabs.com](http://www.duolabs.com). You can find software updates and much more and get the latest news by subscribing our online forum.



## 2. Cas Interface 2 - Kit.

First of all Duolabs would like to thank you for purchasing our product.

Here's what comes in the Kit.



### J-Card

Connects to the 20 Pin Add-On extension connector and goes into the @ Cam for programming.

No need for external power supply.



### Cas Interface 2 Main Unit.

Connects to the USB port of you PC through an A-B USB cable.

No need for external power supply.



### Connection Flat Cable.

Connects the J-Card to the Main Unit.



### 3. Driver Installation.

Download the software Cas Interface Studio from our web site [www.duolabs.com](http://www.duolabs.com)

Install the Cas Interface Studio.

**It's very important to proceed with software download and installation before you connect the Cas Interface 2 to the USB port.**

The Cas Interface Studio has been tested under Windows 98/ME/2000/XP.

To make the first usage please connect the Cas Interface 2 to the USB port and when asks for drivers please follow this procedure:



Select the first option and press "Next".



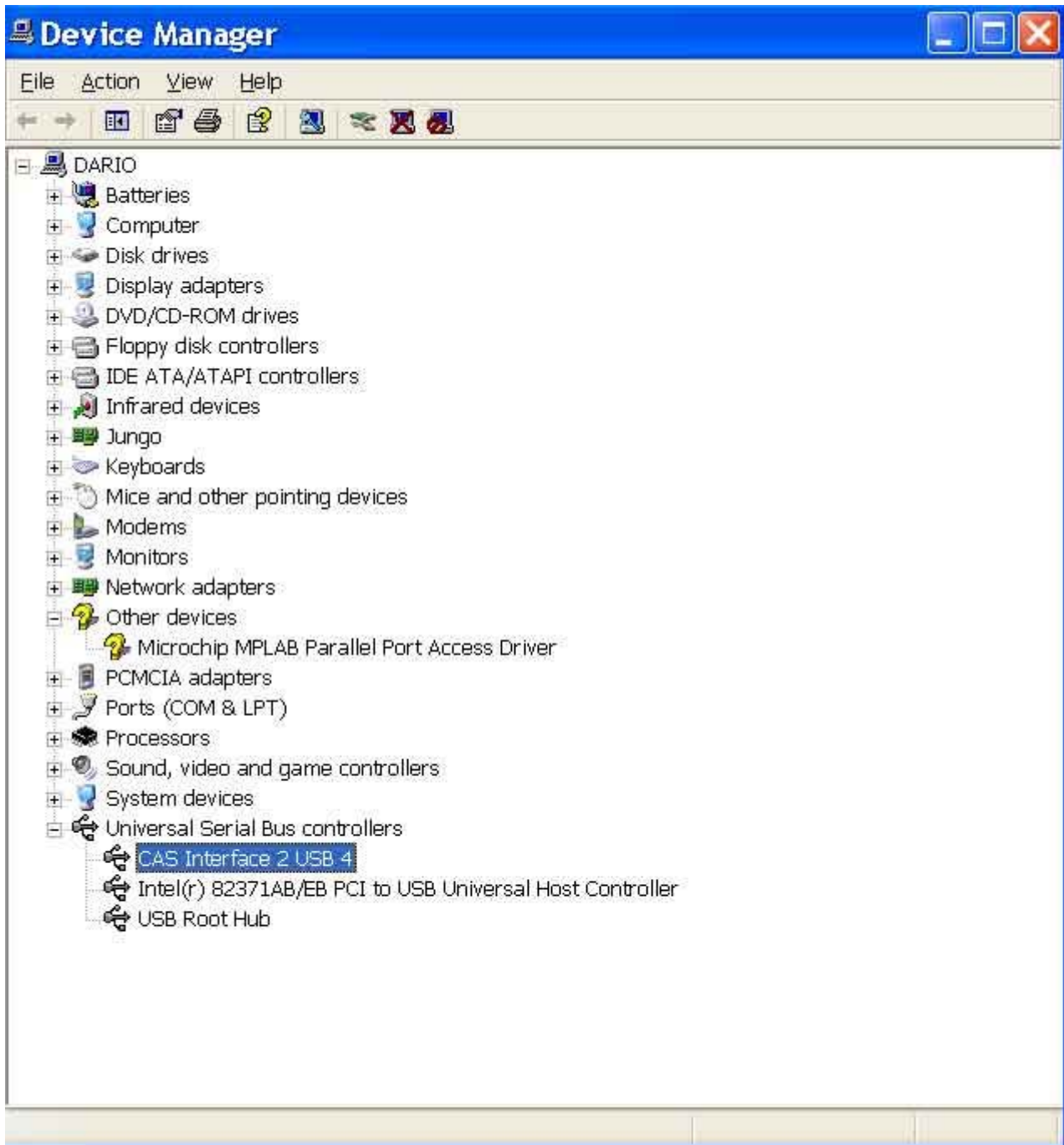
**Press "Next".**



Press "Continue Anyway".



**Press "Finish".**



**Check on Windows Control Panel if the Cas Interface 2 it's recognized or not.**

**If the device comes with a Yellow exclamation mark, re-boot your PC and try again.  
If the problem still remains upgrade drivers.**

**We remind you that you have to install drivers on every single USB port if you have more than one.**



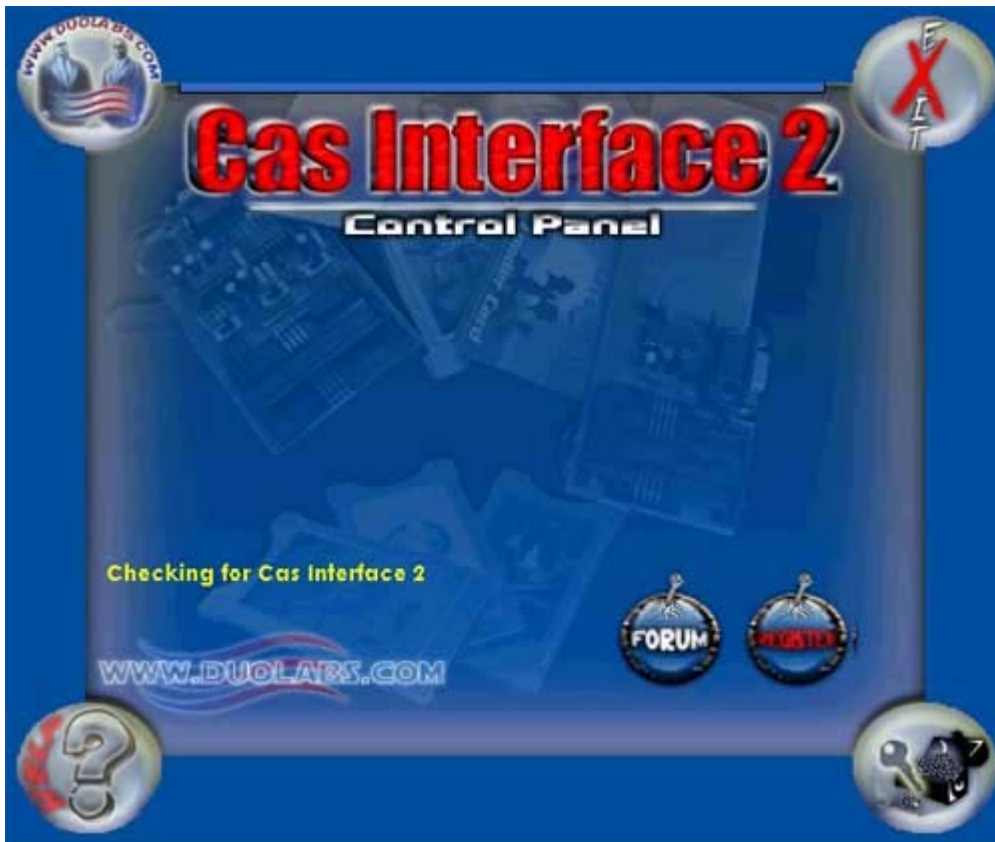
Cas Interface 2 User Manual. Rev. 1.0  
www.duolabs.com – all rights reserved.

## 4. Cas Interface Studio & Control Panel.

To use the Cas Interface 2 connect it to the USB port and launch the software from the Windows "Programs" folder.

If you have the Audio Card connected once the Cas Interface 2 will be recognised by the system you'll hear a sound 2 times.

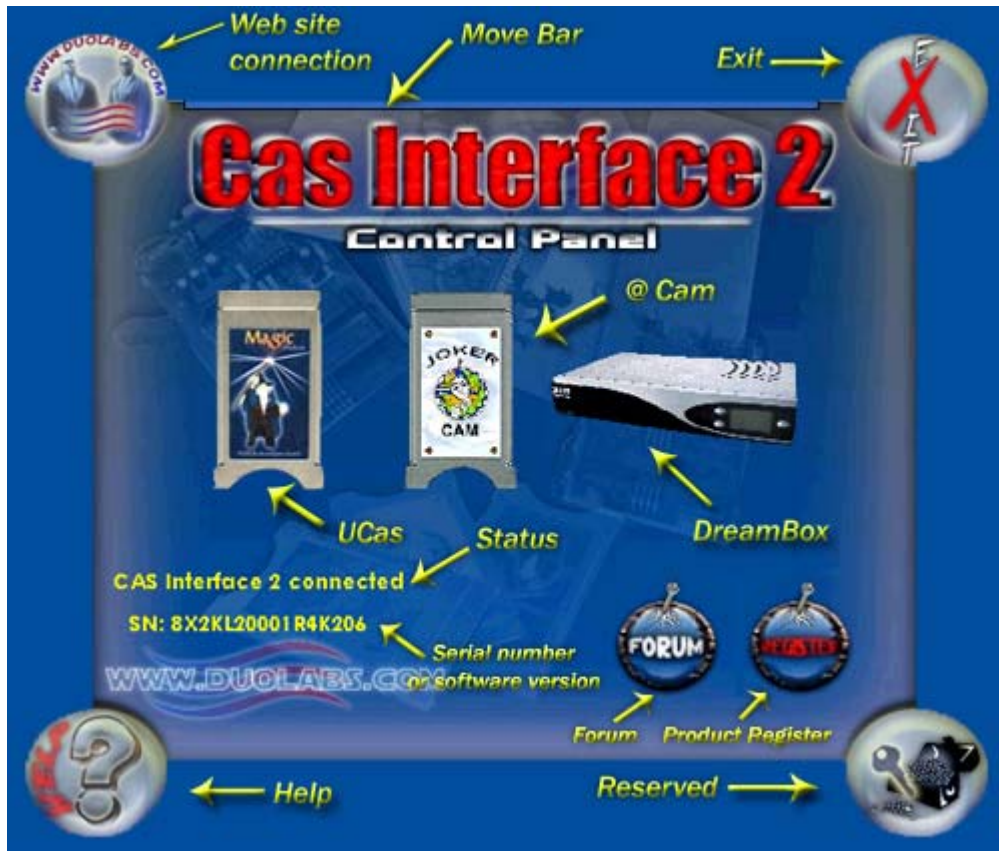
While the software is checking for the Cas Interface 2 you'll see this screenshot:



Checking for Cas Inteface 2.



Once the Cas Interface 2 has been recognized you'll have this menu shown:



The Connection status will be shown together with the Cas Interface 2 serial number.

Here comes the explanation of all parts of the software mask:

**Help** – Connects to an Internet page where all this manuals are.

**Reserved** – Reserved.

**Forum** – Connection to our forum.

**Product Register** – Product registration. We suggest you to register the product in order to get all the information in time and to be enabled for all future functions.

**Ucas** – Ucas programming menu.

**Status** – What's going on with the Cas Interface 2.

**@ Cam** – @ Cam Joker programming menu.

**DreamBox** – Reprogram the faulty Dreambox boot-loader. Further information and connection diagram can be found on our web download area.

**Web site connection** – Connects to our web site.



**Cas Interface 2 User Manual. Rev. 1.0**  
www.duolabs.com – all rights reserved.

***Move bar*** – Moves the software window.

***Exit*** – Exits.

***Serial Number or software version*** – Shows the software version if the Cas Interface 2 is not connected. Once the Cas Interface 2 it's connected it shows the serial number.



## 5. @ CAM Programming.

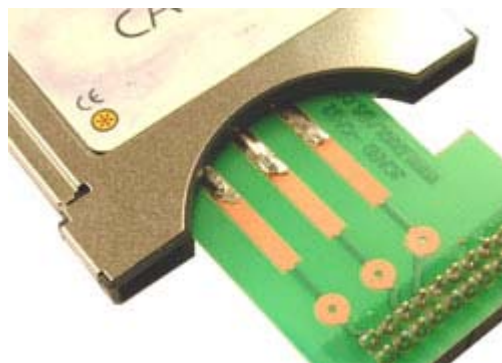
Run the software like in the previous chapter.

Select @ CAM option when the Cas Interface 2 is recognised.

Slide the Cam into the PCMCIA connector:



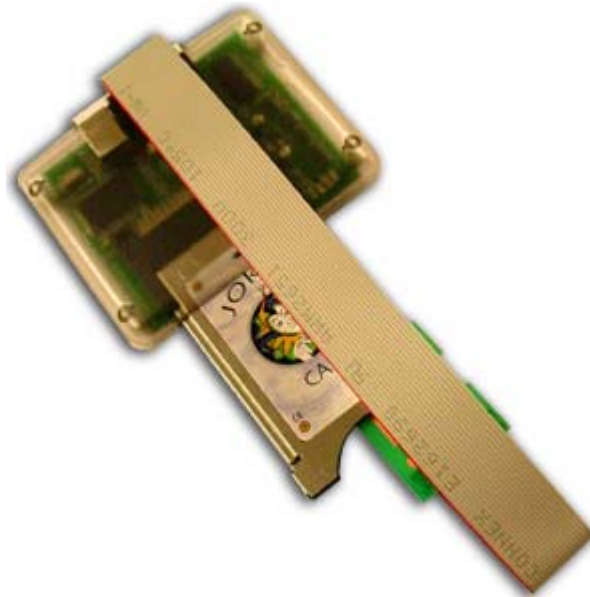
Connect the J-Card to the main unit through the 20 Pins Flat Cable and slide the card softly into the Cam like in the following picture:



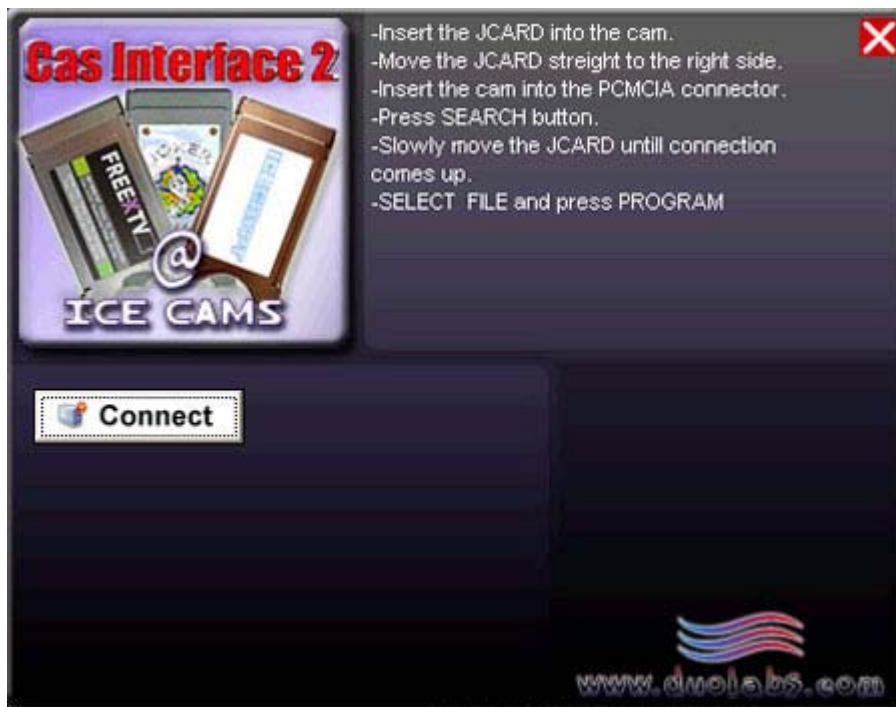
***Please keep all connection PIN clean. Be careful as pins are really fragile and are not covered by the product warranty.***



Slide the J-Card straight to the right side of the Cam and get the configuration as shown in the following picture:



Go to the software mask:



Press "Connect" and a green Led will bright. It means that the Cam is powered.



After the above step you'll get this screenshot:



*If the Joker Cam doesn't come connected please move softly the J-Card in the Cam to get the connection.*

When it comes with the "Joker Connected" press ESC button on your keyboard and you'll get the following screenshot:





**At this time press the "Open File" button and choose the file you want to upload.**

***Attention we don't give any file our and please don't ask us for those files.  
The content of the Atmel device inside the Cam might be copyrighted, please check  
out what's the contact you are uploading.  
Duolabs cannot take and responsibility in case or copyright breaking in your country.  
If you are in doubt don't use this option.***

**Once the File has been chosen press the "Write" button.**

**This operation normally takes around 4/5 minutes.**

**After all the above test the Cam in the receiver. If something is not correct please do  
all the procedure from the beginning.**



## 6. Ucas Programming.

Run the Cas Interface Studio.

Select the Ucas option from the Control Panel.

Insert the Cam in the PCMCIA connector:



### Button's Functions

**“Connect” button. Connects to the Cam.  
It will show the memory type in your Cas Module as well.  
Actual recognized and supported Flash memories are:**

**Toshiba: TC58FVT160AFT  
Hynix: HY29LV160  
ST: M29W160DB  
AMD: AM29LV160LV**

**For other non-recognized Flash Memories the software will try to read/write/verify/erase using standard routines. If you find other Flash memories please contact us reporting the exact Chip's ID and Manufacture's ID shown by the software.**

**At this point you can Read/Erase/Verify (with a loaded buffer)/Write a Flash Memory. Remember to “Erase” Flash before every Write procedure otherwise the programming procedure will not work!**

**“Open File” button. A file dialog box will appear then choose the .bin file you want to load or verify.**



**“Save” button. It will save the memory buffer in a file. Remember that it will refer to the last buffer in memory (loaded or read).**

**“Read” button. It reads the Flash Memory content referring to the “Read/Write Address table” on the right.**

**“Write” button. You must have previously opened a file, otherwise the buffer will result empty. Once “Write” button has been pressed the Counter on the left side will show you the programming position. The software will start writing from position h0000 up to the end of file. You can change the starting position on the “Read/Write Address table” on the right. Write command will skip all locations with “FF” value in order to speed up the writing procedure. Of course the FF bytes are set by the previous “Erase” function. To write a 360 Kbytes file it normally takes 4 minutes depending on computer's speed.**

**“Verify” button. This will verify the buffer previously read or opened with the Flash memory content.**

**“Erase All” button. It takes normally around 1 minute. It will erase the ALL 16 Mbit Flash Memory area (not simply loader area). It will show what block you are erasing.**

**“Edit” button. This runs the Cas Interface 2 File editor.**

**“Xilinx – Write” – Writes the Xilinx 9536 CPLD. Make sure you have this device on your Module or receiver before writing.**



**Cas Interface 2 User Manual. Rev. 1.0**  
www.duolabs.com – all rights reserved.

## **7. General Informations.**

**If you have any problem using your Cas Interface 2 please refer to [www.duolabs.com](http://www.duolabs.com)**

**For official releases of Cas Studio refer to Duolabs.**

**Any .bin file will be given for any reason.**

**You can find more updates and information on our Web Forum.**

**For Purchasing Cas Interface 2 please refer to [www.duolabs.com](http://www.duolabs.com) or authorized dealers.**

**Any re-production of this User Manual is prohibited.**

**All Marks in this manual are registered to their owners.**

**Sincerely,**

**Duolabs Srl  
Riccardo Alessi**

**Duolabs Srl  
Via Molini 39  
36055 Nove (Vicenza)  
Italy  
Tel. +39-0424-828355  
Fax. +39-0424-598665  
Web: [www.duolabs.com](http://www.duolabs.com)  
[www.cellularcenter.it](http://www.cellularcenter.it)  
Email: [info@duolabs.com](mailto:info@duolabs.com)**